

## WHAT IS CARELINK® PERSONAL SOFTWARE?

Carelink Personal software allows you to collect information from your insulin pump, continuous glucose monitoring (CGM) device, and blood glucose meter to evaluate your glucose control through a free, secure, web-based software. These reports can be used during office visits to discuss therapy changes with your healthcare professional. You can also monitor your progress to improved glucose management.

## WHAT DO I NEED TO START?

All it takes to get started is an easy upload using the CONTOUR® NEXT LINK blood glucose meter or the CareLink USB provided with your Medtronic pump or CGM.

## SIGN UP IS EASY

Before using for the first time, you need to set up a user account and password. Go to: <http://medtronicdiabetes.com/carelink>

## TO CREATE AN ACCOUNT, START AT THE WELCOME SCREEN AND FOLLOW THESE EASY STEPS:



**1** From the Welcome screen, click the **Sign Up Now** button and select language.



**2** After you accept the terms of agreement, you'll be asked to **create a username and password**. The password can be any combination of letters or numbers from 8 to 32 characters long and include one uppercase letter, one number, and one special character. Passwords are case-sensitive.



**3** Enter your **personal information** in all the required fields. You will be asked to follow through the reCAPTCHA feature of enrollment on the bottom of the screen. Check the box and click **Submit**. Once you have registered, you can log in from the Welcome screen using your new username and password.

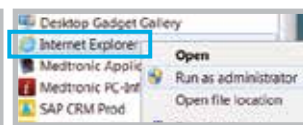
Please consult the **Getting Started Guide** available on the CareLink Personal software homepage for more information on sign up or by accessing <http://www.medtronicdiabetes.com/CareLink-Getting-Started-Guide>

## BROWSER SETUP BEFORE UPLOAD: FOR WINDOWS 7, 8, 8.1, AND 10, YOU WILL NEED ADMINISTRATOR RIGHTS.



Windows 7

**1** Be sure all open windows in Internet Explorer are closed.

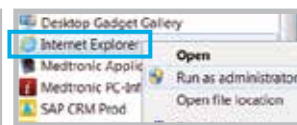


**2** Open your **Start Menu** and click on **All Programs** RIGHT-CLICK on your **Internet Explorer icon** and select **Run as Administrator**. Click **Allow** in the User Account Control window.

Windows 8 or Windows 8.1



**1** From the Start screen, click the Desktop tile and make sure you are viewing the desktop.



**2** RIGHT-CLICK on **Internet Explorer® icon** from the task bar, RIGHT-CLICK again on **Internet Explorer** in the menu that appears. Select **Run as administrator**. Click **Allow** in the User Account Control window.

Windows 10



**1** From your Start menu on your desktop, go to All Apps, then Windows Accessories.

**2** RIGHT-CLICK on **Internet Explorer** in the menu list. Select **Run as Administrator**. Click **Allow** or **Yes** in the User Account Control window.

## UPLOADING DATA FROM YOUR DEVICE



**1** Go to <http://medtronicdiabetes.com/carelink>, enter your **Username and Password**, and click on **Sign In**.



**2** **DO NOT CONNECT** your CONTOUR®NEXT LINK or CareLink USB to the computer until prompted. Click on **Upload Data from My Device**. Allow the Java Plug-in to load.



**3** Choose device and select **MiniMed® Insulin Pump** and click **Next**. The **Check Pump Status...** screen will appear, then click **Next**.



**4** Select your pump type. For the MiniMed® 670G pump, select **MiniMed 600 series**.



**5** Enter your pump's serial number as instructed on the **Identify the pump** screen.



**6** Choose the correct **USB linking device** you are using. Most commonly, it will be your CONTOUR®NEXT LINK meter. Click **Next** to continue.



**7** **CONNECT** your USB linking device to your computer. The **Verify Connections** screen will appear to confirm communication between your devices and inform you when setup is complete. Click **Finish** to continue.



**8** A progress window will then be displayed. The amount of time it takes to upload your data will depend on how much data needs to be uploaded. When the upload completes successfully, you are now able to view your reports.

## STILL HAVE QUESTIONS?

Please call our 24-Hour HelpLine at **1.800.646.4633, option 1**.

For a list of supported operating systems please see: <http://www.medtronicdiabetes.com/support/carelink-personal>

Please visit [www.medtronicdiabetes.com](http://www.medtronicdiabetes.com) for detailed product and important safety information.